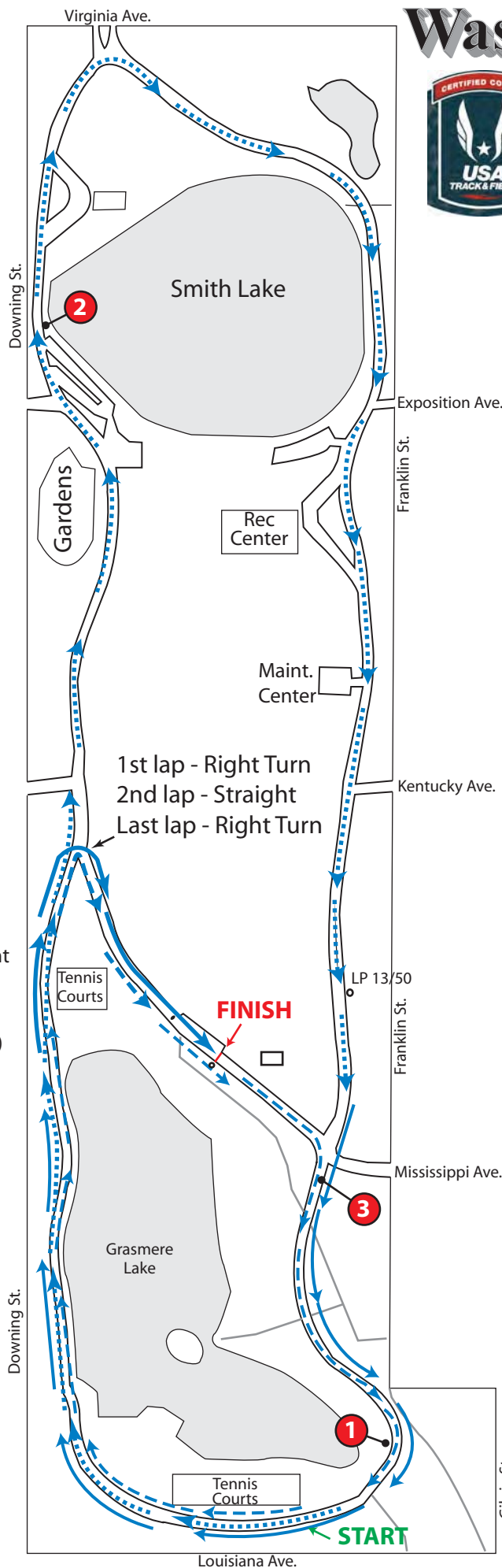


Washington Park 4^{mile}

Denver, CO

USATF certificate # CO10028DCR

Effective 6/12/10 - 12/31/2020



START

1' W of E wall of restroom building at tennis courts

1 mile

12' S of S edge of west bridge abutment

2 mile

30' N of LP 52/69 (on west side of road)

3 mile

12' S of bollards at Mississippi

FINISH

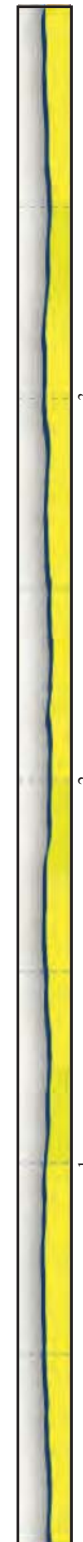
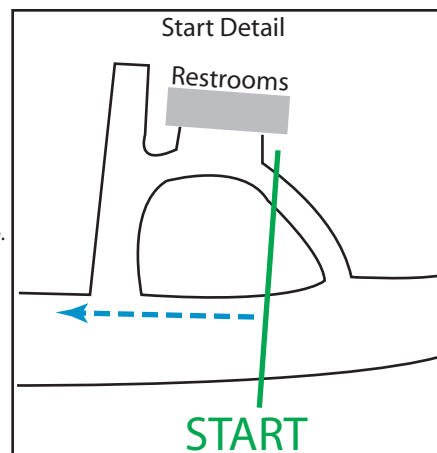
Edge of parking lot, at light pole 10/58

1st lap - Right Turn
2nd lap - Straight
Last lap - Right Turn

GPS coordinates are given only to assist in locating marks. NOT to be used to replace lost marks. NAD 83

Start: N39.69329° W104.97030°
1m: N39.69407° W104.96878°
2m: N39.70472° W104.97317°
3m: N39.69669° W104.96971°
Finish: N39.69775° W104.97101°

Although arrows are not all on road, runners are always on road. Arrows are off of road only to show separate laps.



Start elevation: 5305' Finish elevation: 5318' High point: 5358' Low point: 5305' Measurement and map by RaceMeasure, May 2010. www.RaceMeasure.com Elevation profile by MapMyRun.com

